

DUAL VEE GUIDE WHEEL



W... ZZ , W... 2RS, SW...2RS

◆ Material:

Bearing Steel -52100
Stainless Steel - 440C (prefix "S")

◆ Retainer:

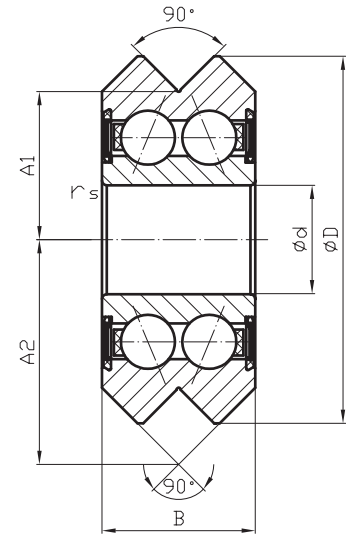
Nylon 66

◆ Shields and Seals (suffix):

ZZ - Double SPCC shields
2RS- Double NBR Seals

◆ Tolerance Class:

AEBC-1, ABEC-3.



C&H	Dimensions(mm)						Load Ratings(N)		Limiting Speed(r/min)		Weight ≈(Kg)
	d	D	B	A1	A2	rs	Cr	Cor	ZZ	2RS	
W0	4	14.84	6.35	5.94	9.12	0.3	1480	660	28000	21000	0,005
W1	4.763	19.56	7.87	7.93	11.86	0.3	2280	1140	25000	16000	0,011
W2	9.525	30.73	11.1	12.7	18.24	0.3	4700	2600	18000	9000	0,038
W3	12	45.72	15.88	19.05	26.98	0.6	9300	5100	16000	7600	0,130
W4	15	59.94	19.05	25.4	34.93	1.0	14800	8200	12000	5300	0,280
SW0-2RS	4	14.84	6.35	5.94	9.12	0.3	1480	660	28000	21000	0,005
SW1-2RS	4.763	19.56	7.87	7.93	11.86	0.3	2280	1140	25000	16000	0,011
SW2-2RS	9.525	30.73	11.1	12.7	18.24	0.3	4700	2600	18000	9000	0,038
SW3-2RS	12	45.72	15.88	19.05	26.98	0.6	9300	5100	16000	7600	0,130
SW4-2RS	15	59.94	19.05	25.4	34.93	1.0	14800	8200	12000	5300	0,280

Standard: Bore diameter +0/-0.008mm, outer diameter ±0.013mm, width +0/-0.008mm